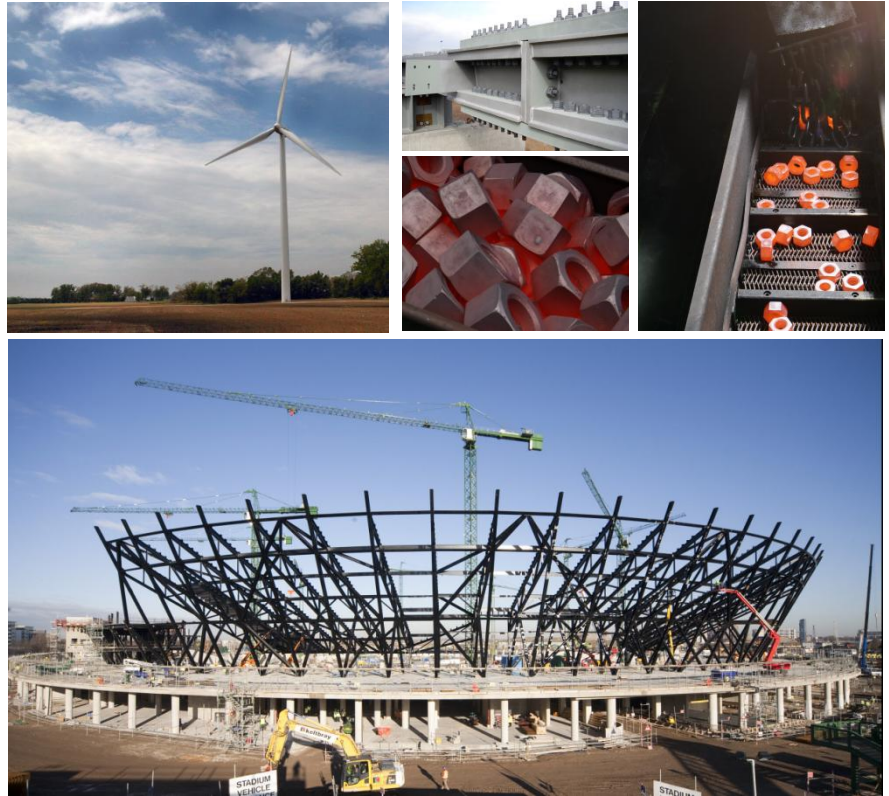


Creating The Fundamentals





We are continually positioning ourselves at the forefront of the ever changing global market.

To maintain the quality and reliability of KPF products, we are continuously expanding our facilities and applying the latest technologies.

KPF produces...

Hot forging product

Through our hot forging process we can make a variety of products ranging in size from $\phi 19$ to $\phi 105$. We are also highly experienced in manufacturing a variety of industrial use products, such as nuts and bearings. We have a comprehensive forging facility that can handle a wide variety of steels including tough alloy and bearing steels as materials for coils. We use our own forming technology that can prevent excess flash in bolts, thus producing a clean bolt directly from the mold. Our mold technology enables us to make 100% of the forging molds in-house.

Cold forging product

Through our cold forging process we can produce industrial spanners ranging from M8 to M36, which are widely used in automotive components. Our cold forged products are renowned for their durability and precision which is necessary for the steering wheels, transmission components and engine blocks of automobiles. In particular, the quality of our sockets, valves and cases is highly regarded in the global market.

Bearings

Both the inner and outer races of our automotive hub bearings are produced through a continuous process line from forging to final QT. They are our representative items that meet the stringent requirements of our customers.

Wind Power

KPF produces nuts and bolts used for wind power generation equipment, such as high-tensile nuts and bolts for flange assemblies for power generators and blades. We supply them to leading wind power generation companies such as GE Wind and Unison. We have since defined the wind power generation market as a new market and are concentrating our quality and technical efforts on this area.



PRODUCTS RANGE

Description	Specification	Range
STRUCTURAL BOLT,NUT,WASHER	DIN 6914, 6915, 6916	
T-BOLT	PURCHASE ORDER	
BARREL NUT	PURCHASE ORDER	
FOUNDATION ANCHOR BOLT	PURCHASE ORDER	



Equipped with both hot and cold forging facilities, KPF has been continuously expanding its manufacturing facilities at the Chungju Plant, the best in the industry, and improving our production lines.



Find out more online

More information is available at
www.kpf.co.kr

The website contains all you want to know
about KPF and products

If you require any further assistance or technical information, please contact



America Division

Willis Kim / Manager
Tel : 82-43-849-1211
Cell : 82-10-2291-9493
Fax : 82-43-849-1234
E-mail : yykim@kpf.co.kr

Europe-Asia Division

Moonwoo Park / Manager
Tel : 82-43-849-1303
Cell : 82-10-8803-0452
Fax : 82-43-849-1234
E-mail : mwpark@kpf.co.kr

