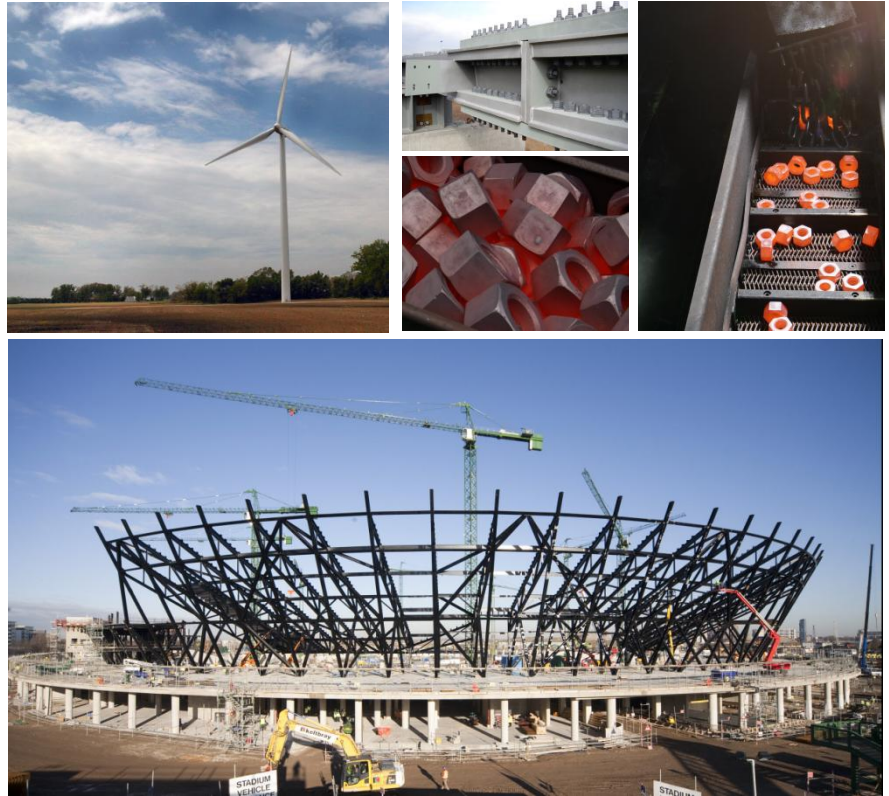


# Creating The Fundamentals





We are continually positioning ourselves at the forefront of the ever changing global market.

To maintain the quality and reliability of KPF products, we are continuously expanding our facilities and applying the latest technologies.

## **KPF produces...**

### **Hot forging product**

---

Through our hot forging process we can make a variety of products ranging in size from  $\phi 19$  to  $\phi 105$ . We are also highly experienced in manufacturing a variety of industrial use products, such as nuts and bearings. We have a comprehensive forging facility that can handle a wide variety of steels including tough alloy and bearing steels as materials for coils. We use our own forming technology that can prevent excess flash in bolts, thus producing a clean bolt directly from the mold. Our mold technology enables us to make 100% of the forging molds in-house.

### **Cold forging product**

---

Through our cold forging process we can produce industrial spanners ranging from M8 to M36, which are widely used in automotive components. Our cold forged products are renowned for their durability and precision which is necessary for the steering wheels, transmission components and engine blocks of automobiles. In particular, the quality of our sockets, valves and cases is highly regarded in the global market.

### **Bearings**

---

Both the inner and outer races of our automotive hub bearings are produced through a continuous process line from forging to final QT. They are our representative items that meet the stringent requirements of our customers.

## Petrochemical Plant

KPF stud nuts & bolts and heavy hex bolts are supplied to major petrochemical plant construction sites both at home and abroad, such as for major petrochemical complexes at GS Caltex Yeosu, Ulsan and Daesan, and for petrochemical plants in the Middle East, Indonesia, Texas and along the North Sea.



### PRODUCTS RANGE

Description	Specification	Range
STUD BOLT, NUT	ASTM A193/A193M, ASTM A320/A320M, ANSI B16.5, JIS G4107, DIN 9768, BS 4882	M12-M64 (3/8" - 3-1/2")
HEAVY HEX BOLT	ASTM A193/A193M ASTM A320/A320M	M8-M64 (3/8" - 2-1/2")
HEAVY HEX NUT	ASTM A194/194M ASTM A563/A563M	M12-M64 (1/2" - 2-1/2")



Equipped with both hot and cold forging facilities, KPF has been continuously expanding its manufacturing facilities at the Chungju Plant, the best in the industry, and improving our production lines.



**Find out more online**

More information is available at [www.kpf.co.kr](http://www.kpf.co.kr)  
The website contains all you want to know about KPF and products

**If you require any further assistance or technical information, please contact**



**America Division**

Willis Kim / Manager  
Tel : 82-43-849-1211  
Cell : 82-10-2291-9493  
Fax : 82-43-849-1234  
E-mail : [yykim@kpf.co.kr](mailto:yykim@kpf.co.kr)

**Europe-Asia Division**

Moonwoo Park / Manager  
Tel : 82-43-849-1303  
Cell : 82-10-8803-0452  
Fax : 82-43-849-1234  
E-mail : [mwpark@kpf.co.kr](mailto:mwpark@kpf.co.kr)

