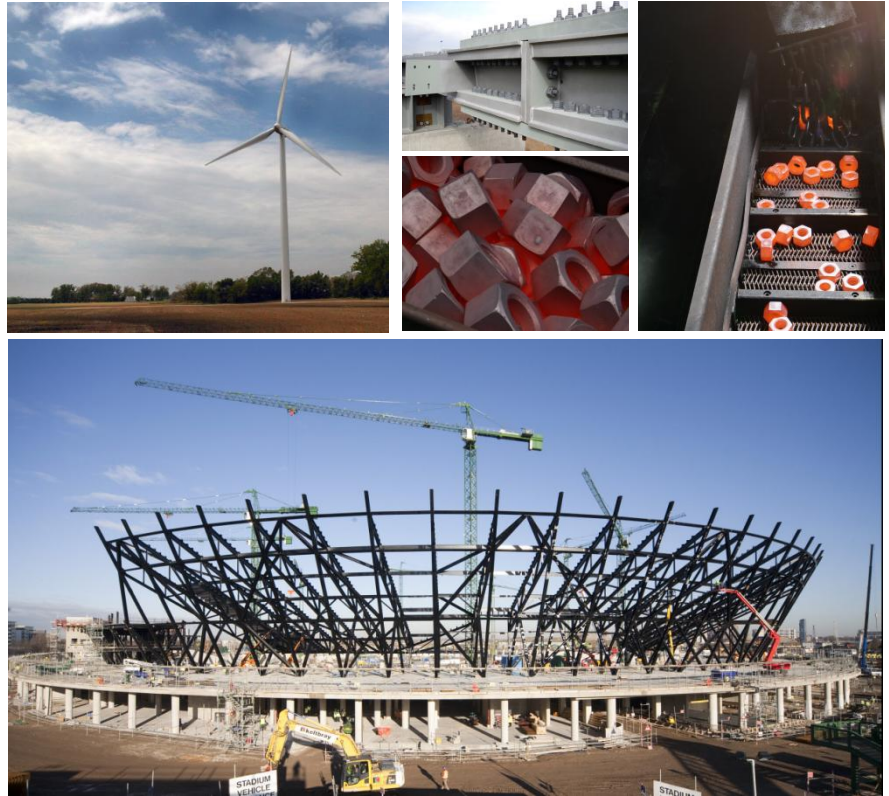


Creating The Fundamentals





We are continually positioning ourselves at the forefront of the ever changing global market.

To maintain the quality and reliability of KPF products, we are continuously expanding our facilities and applying the latest technologies.

KPF produces...

Hot forging product

Through our hot forging process we can make a variety of products ranging in size from $\phi 19$ to $\phi 105$. We are also highly experienced in manufacturing a variety of industrial use products, such as nuts and bearings. We have a comprehensive forging facility that can handle a wide variety of steels including tough alloy and bearing steels as materials for coils. We use our own forming technology that can prevent excess flash in bolts, thus producing a clean bolt directly from the mold. Our mold technology enables us to make 100% of the forging molds in-house.

Cold forging product

Through our cold forging process we can produce industrial spanners ranging from M8 to M36, which are widely used in automotive components. Our cold forged products are renowned for their durability and precision which is necessary for the steering wheels, transmission components and engine blocks of automobiles. In particular, the quality of our sockets, valves and cases is highly regarded in the global market.

Bearings

Both the inner and outer races of our automotive hub bearings are produced through a continuous process line from forging to final QT. They are our representative items that meet the stringent requirements of our customers.



Heavy Equipment

KPF was the first in Korea to develop collar bolts in the 1970's and has been supplying them ever since. We have been contributing to the development of the domestic machinery and heavy equipment industries by continuously

Description	Specification	Range
12POINT FLANGE NUT	PURCHASE ORDER	5/8" - 1-1/2"
12POINT FLANGE SCREW	IFI 115	3/8"-1 1/2"
CASTLE NUT	PURCHASE ORDER	
CYLINDER HEAD BOLT	PURCHASE ORDER	M10-M24
GUIDE BOLT/NUT	PURCHASE ORDER	
HEX BOLT	JIS B 1180	
HEX CAP SCREW	JIS B 1180	
HEX CONE NUT	IFI 10/107	
HEX FLANGE SCREW	IFI 111 IFI 536	M8-M20 (3/8"-3/4")
HEX FLANGE NUT	SAE J995 IFI 100/107	
HEX JAM NUT	ANSI/ASME B18.2.2	
HEX SOCKET HEAD CAP SCREW	ANSI B18.3 DIN 912	M8-M64 (3/8"-2 1/2")
LOCK NUT	SAE J995 IFI 100/107	
PLOW BOLT		
SLOTTED NUT	ANSI/ASME B18.2.2	
SQUARE BOLT/NUT	PURCHASE ORDER	
TOWER BOLT,NUT,WASHER		
TRACK SHOE BOLT/NUT		
TWO PIECES WHEEL NUT	PURCHASE ORDER	
WEDGE BOLT/NUT	PURCHASE ORDER	
WHEEL BOLT		3/8"-1"
WHEEL NUT	PURCHASE ORDER	



Equipped with both hot and cold forging facilities, KPF has been continuously expanding its manufacturing facilities at the Chungju Plant, the best in the industry, and improving our production lines.



Find out more online

More information is available at
www.kpf.co.kr
The website contains all you want to know
about KPF and products

If you require any further assistance or technical information, please contact



America Division

Willis Kim / Manager
Tel : 82-43-849-1211
Cell : 82-10-2291-9493
Fax : 82-43-849-1234
E-mail : yykim@kpf.co.kr

Europe-Asia Division

Moonwoo Park / Manager
Tel : 82-43-849-1303
Cell : 82-10-8803-0452
Fax : 82-43-849-1234
E-mail : mwpark@kpf.co.kr

