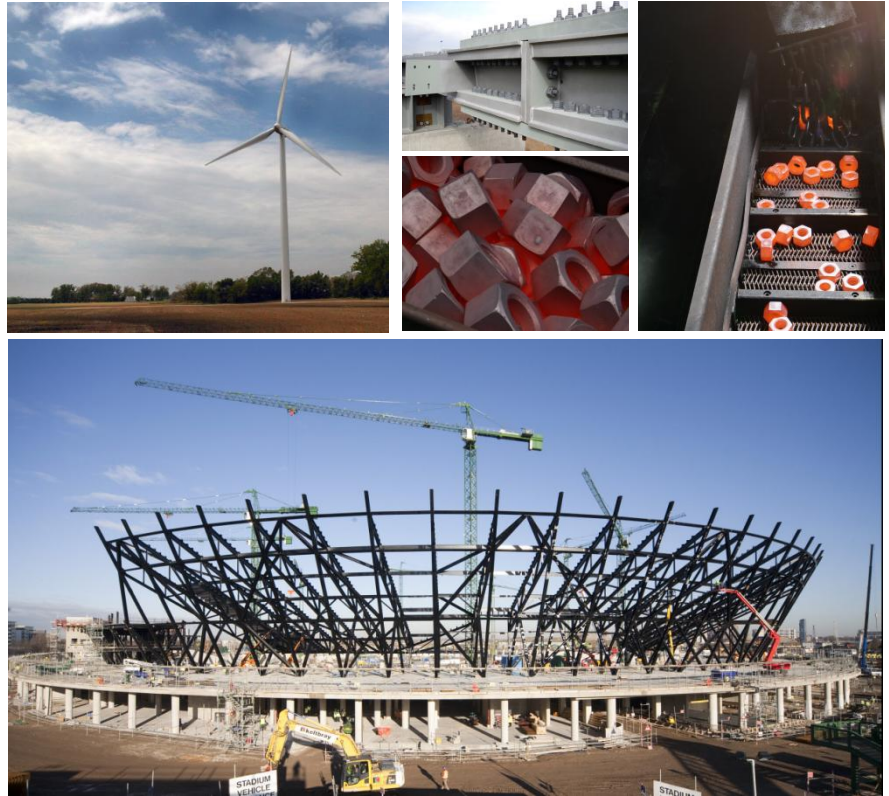


# Creating The Fundamentals





We are continually positioning ourselves at the forefront of the ever changing global market.

To maintain the quality and reliability of KPF products, we are continuously expanding our facilities and applying the latest technologies.

## KPF produces...

### Hot forging product

---

Through our hot forging process we can make a variety of products ranging in size from  $\phi 19$  to  $\phi 105$ . We are also highly experienced in manufacturing a variety of industrial use products, such as nuts and bearings. We have a comprehensive forging facility that can handle a wide variety of steels including tough alloy and bearing steels as materials for coils. We use our own forming technology that can prevent excess flash in bolts, thus producing a clean bolt directly from the mold. Our mold technology enables us to make 100% of the forging molds in-house.

### Cold forging product

---

Through our cold forging process we can produce industrial spanners ranging from M8 to M36, which are widely used in automotive components. Our cold forged products are renowned for their durability and precision which is necessary for the steering wheels, transmission components and engine blocks of automobiles. In particular, the quality of our sockets, valves and cases is highly regarded in the global market.

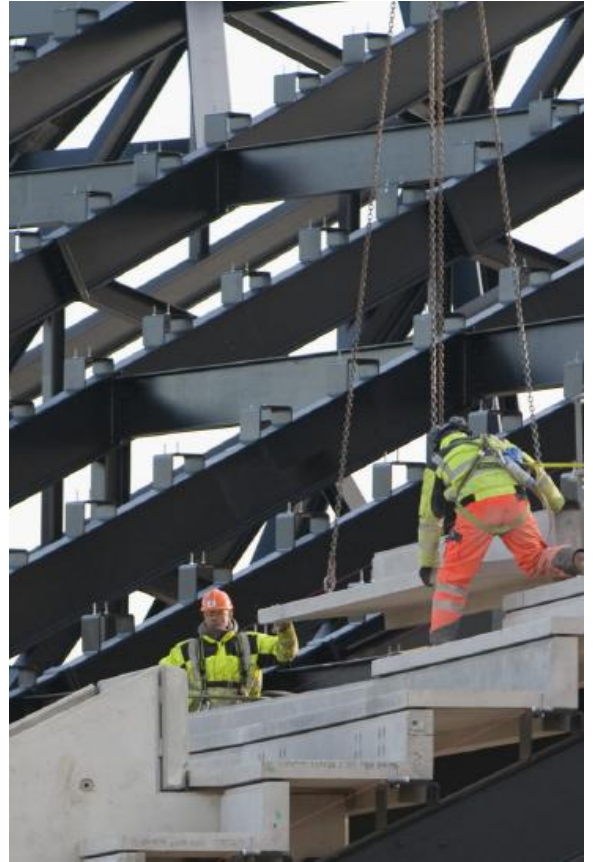
### Bearings

---

Both the inner and outer races of our automotive hub bearings are produced through a continuous process line from forging to final QT. They are our representative items that meet the stringent requirements of our customers.

## Construction

KPF was the first in Korea to develop the T/C BOLT, and has been advancing the fastener technology necessary for steel structures. KPF products have been widely used for a variety of high-profile construction projects both at home and abroad, including the Yeongjong Bridge, Incheon Bridge, Gwangang Bridge, Tower Palace, San Francisco BAY BRIDGE, MIAMI AIRPORT and the 2010 SOUTH AFRICAN WORLD CUP STADIUM.



### PRODUCTS RANGE

Description	Specification	Range
H/T BOLT,NUT,WASHER2	KS B1010, JIS B1186, BS 4395	M12-M36
T/C BOLT,NUT,WASHER	KS B2819, JSSII-09, ASTM F1852, ASTM A325 /A325M, ASTM A490/A490M	M12-M30 (1/2"-1 1/8")
STRUCTURAL BOLT,NUT,WASHER	ASTM A325/A325M ASTM A490/A490M DIN 6914, AS1252	M12-M36 (1/2"-1 1/2")
COUPLING	PURCHASE ORDER	



Equipped with both hot and cold forging facilities, KPF has been continuously expanding its manufacturing facilities at the Chungju Plant, the best in the industry, and improving our production lines.



**Find out more online**

More information is available at  
[www.kpf.co.kr](http://www.kpf.co.kr)

The website contains all you want to know  
about KPF and products

**If you require any further assistance or technical information, please contact**



**America Division**

Willis Kim / Manager  
Tel : 82-43-849-1211  
Cell : 82-10-2291-9493  
Fax : 82-43-849-1234  
E-mail : [yykim@kpf.co.kr](mailto:yykim@kpf.co.kr)

**Europe-Asia Division**

Moonwoo Park / Manager  
Tel : 82-43-849-1303  
Cell : 82-10-8803-0452  
Fax : 82-43-849-1234  
E-mail : [mwpark@kpf.co.kr](mailto:mwpark@kpf.co.kr)

